

## Tips for Photographing Shade



1. Place incisal edge of shade tab to incisal edge of teeth leaving a small space between them.
2. Shade tab should be aligned in the same plane as teeth.
3. Include shade tab numbers in the photo frame. If numbers are not included in photograph, then note the shade tab arrangement on the script.
4. Angle camera flash to minimize glare spot.
5. Turn operator light off during photography session.
6. Use camera with a macro lens and ring flash or dual point flash.
7. Use correct camera settings for maximum depth of field (all teeth should be in focus).



### Stump Shade Photography

1. For all-ceramic restorations always provide a stump shade photo.
2. Follow the same edge-to-edge positioning rules to photograph the stump shade tabs.
3. Include the stump shade tab numbers.
4. Turn off operator light during photography session.

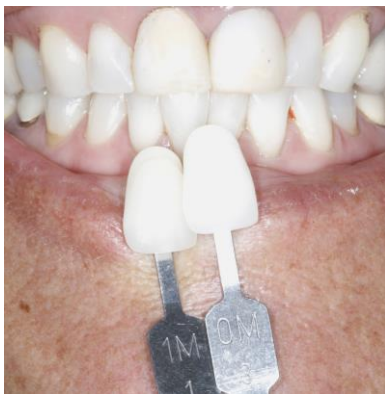
## Examples of Incorrect Shade Photographs



Shade tabs in wrong position



Shade tab numbers are missing



Subject is overexposed.



Adjusting the camera angle will minimize glare from flash.